

SPECTRO1-Scope:

Changes due to software update from SPECTRO1-Scope V2.7 to V2.8

This manual summarises the changes that were made with the software update from **SPECTRO1 V2.7** to **V2.8**.

A software update from V2.x to V2.8 can be performed quite easily.

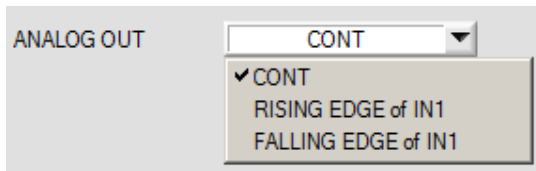
All you need is the FirmwareLoader V1.1 and the firmware files for version 2.8.

The FirmwareLoader V1.1 can be found on the software CD/DVD that is provided with the sensor or can be downloaded from our homepage.

The firmware files are available from your sensor supplier.

The respective procedure is exactly described in the "[Manual FirmwareLoader V1_1](#)" file (see software CD/DVD: Folder Support Software → Version Update → FirmwareLoader V1.1).

Change 1:



FALLING EDGE of IN1 was added to **ANALOG OUT**.

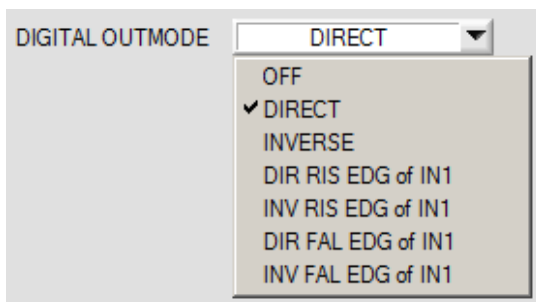
There are now three settings that define the time when the analog signal is output.

CONT: The analog signal is output continuously.

RISING EDGE of IN1: The analog signal only is output when there is a positive edge at IN1.

FALLING EDGE of IN1: The analog signal only is output when there is a negative edge at IN1.

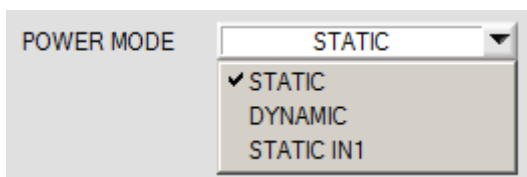
Change 2:



DIR FAL EDG of IN1 and **INV FAL EDG of IN1** were added to **DIGITAL OUTMODE**.

In contrast to **DIR RIS EDG of IN1** and **INV RIS EDG of IN1** the outputs here are not updated at a positive, but at a negative edge at input IN1.

Change 3:

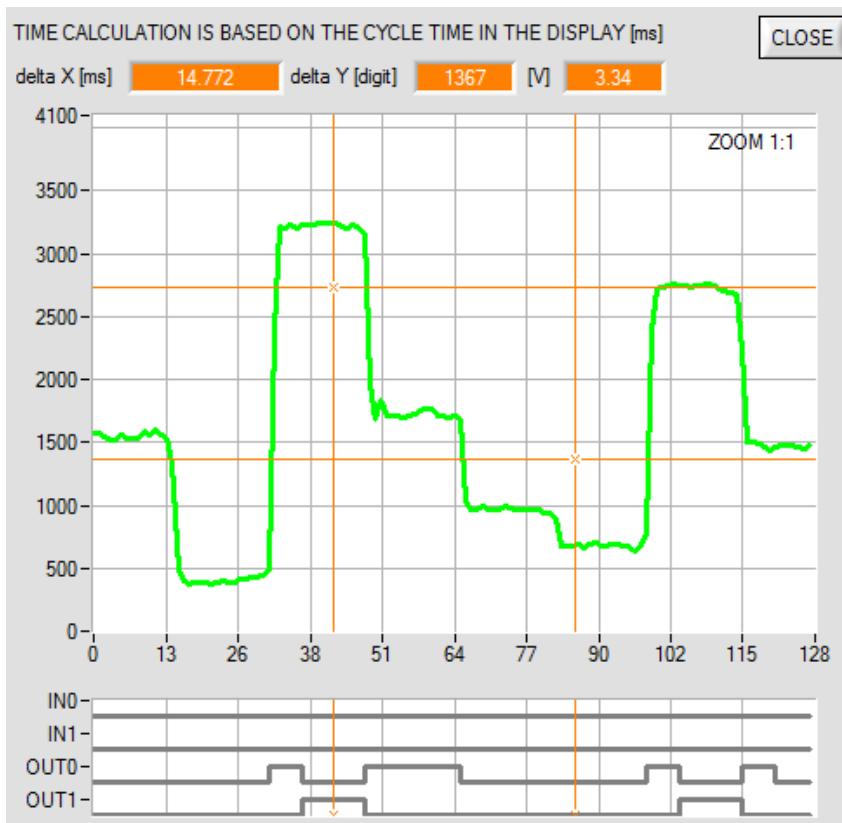


STATIC IN1 was added to **POWER MODE**.

This means that the transmitter source only is on when input IN1 is set (high).

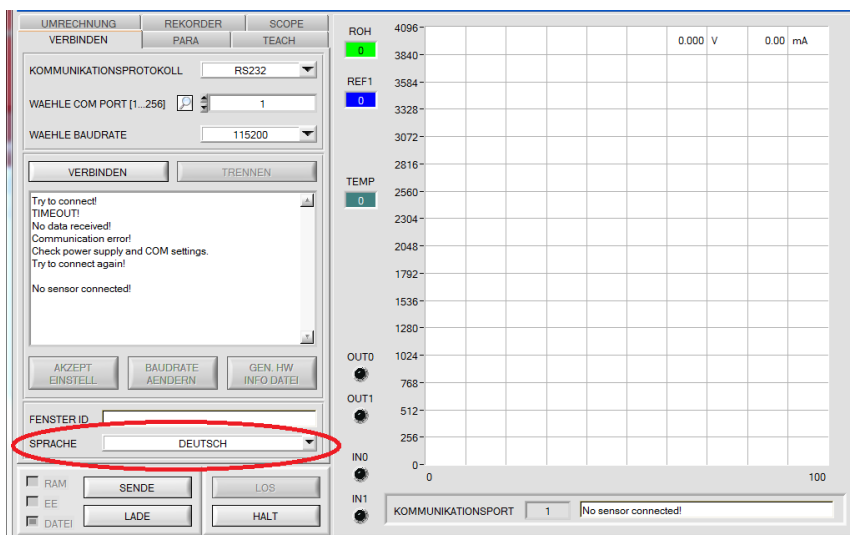
The transmitter is off when IN1 is low (0V).

Change 4:



In the **SCOPE** tab the graph now also displays the status of inputs **IN0** and **IN1**.

Change 5:



The user interface is now available in two languages (can be selected via LANGUAGE / SPRACHE).